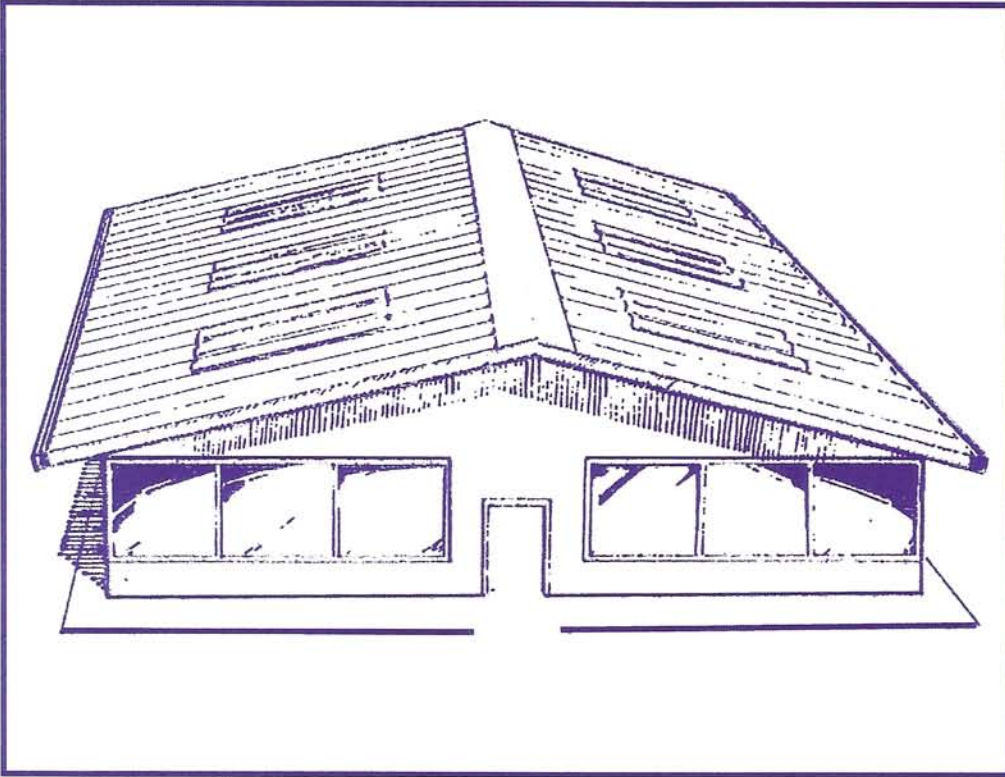


**WEATHERTITE COATINGS** Inc.

## BUTYL TAPE



**Polyester Fabric  
embedded in Butyl  
Tape**

Size: 4" or 6" widths  
x 50' roll length

For Use on Cleaned  
Metal: **small cracks, joints,  
seams, panel laps, parapets,  
around vents, chimneys,  
solar/skylight panels.**

Product used with:  
**WEATHERPROOF, INC.**  
elastomeric coatings

### **Butyl Tape used with elastomeric materials:**

The polyester fabric embedded butyl tape reinforces elastomeric material and bridges gaps in metal roofs for waterproofing protection. It is commonly used to seal cracks, joints, flashing, termination points and other areas of stress caused by thermal action (expansion or contraction), commonly found in metal roofing.

### **When used...**

with our elastomeric top coat the Butyl Tape permits a high-film build over areas of excessive movement such as vents, vertical joints, laps, and ridge caps which help defuse the stress created by a crack or opening in the metal roof surface.

